



## SUMMER 2015

Welcome to our Summer 2015 of our "Grow With Us" Newsletter. As we write this, our corn is in mid-pollination and both corn and soybeans have enjoyed a pretty good growing season overall. I know this crop has a long way to go until it's in the bin, but it appears we have the potential to harvest a very nice crop. As we all know, soybeans are made in August, so let's hope we continue to receive some timely rains to finish off the soybean crop! Inside this newsletter you will find a summary of Evan's summer of scouting and problem-solving. He was kept busy checking various issues regarding both corn and soybeans. Every growing season brings some new challenges and I think you find it interesting to read about some of his observations. We are also in the middle of signing some of our growers' fields and as always we thank the growers who allow us to do that. You will always see that at Larson Seeds we put the Hybrid or Variety on the sign so that as you watch these fields for the remainder of the growing season you can keep track of what's behind the sign and possibly help you make some decisions as you go forward. Thanks again for allowing us the opportunity to share what's in your field with the other growers!

Also, in this issue you will want to check out the dates of our upcoming Sanborn Field Days, and our Ribeye Appreciation Dinner. We will send reminders out as we get closer to those dates. As usual, we will be working in the Dekalb-Asgrow booth at Farm Fest, and once again, we will be handing out beef dinner tickets, so stop by and see what's new in our booth and say **Hi!** I hope you enjoy our newsletter and I look forward to seeing everyone at our upcoming events. THANKS!!!

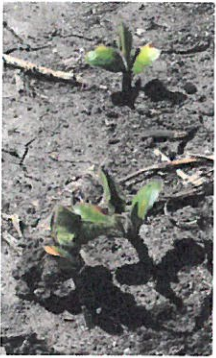
Jack



## FROM THE FIELD



It is safe to say this year's growing season is flying by, and it's hard to believe Watermelon Days is already here and FarmFest is only a week away! Looking back, this year has presented its share of interesting challenges, many new ones. Planting conditions this spring were near ideal. However, these dry conditions led to some uneven emergence in the corn. Some seeds were planted into dry soil and did not imbibe enough moisture to germinate as seeds that were planted directly into moisture. While these differences were noticeable during emergence, most were able to catch up and evened out.



Soybean emergence was hindered slightly by some of the pre-emergence herbicides used. As with many of the issues we see over the growing season this was a result of multiple factors coming together at the same time. In this case the warm dry conditions many of the beans were planted into quickly switched to cool and wet. At these temperatures the soybean seedlings stalled just prior into emerging in the top half inch of the soil profile where the herbicide was placed. While the seedlings appeared scarred at the time of emergence (shown), many quickly grew out of the symptoms. This was the first time in the past three years of using soybean pre-emerge herbicides that we had seen this issue, however we would still encourage the use of a pre-emerge herbicide as they are essential to a successful weed management program.

As summer progressed, we noticed instances of Flexstar carryover injury in corn, some buggy whipping from the June 22 storm, and HPPD (products such as Callisto and Laudis) drift damage to soybeans. The Flexstar carryover we observed was isolated to high clay areas such as clay knolls, areas of possible boom overlap, and most resulted from later applications the prior year. Flexstar has a 10 month rotation restriction and making applications into mid or late July is not recommended. In monitoring the corn that was whipped at the top during the June 22 storm, many of the plants have recovered, placed an ear, and tasseled. An occasional plant did break at the top, but the break occurred above the growing point and the ear.

Going forward, we have been looking for aphids and keep monitoring the many trials at the Sanborn Test Plot. One in particular is Year 2 of our Corn Rootworm trial, which compares our SmartStaxx Rootworm protection to a hybrid with no below ground traits. We also compare each trait option with a granular insecticide placed in a T-band at the time of planting. We have been monitoring the levels of larvae in the soil and have a beetle trap placed to identify which species are present. Our root digs also allow us to monitor feeding levels on the roots. We are conducting this test on an area of the plot that is ten plus years of continuous corn. The picture to the right shows corn rootworm larvae in the 1st instar, 2nd instar and pupae stage.



You can see this and many other of these trials at our **Sanborn Field Day** on **August 27!**

**I hope everyone enjoys the rest of the summer and is getting excited for fall!**



## STEVE'S CORNER

### PLOT LOCATIONS/2016 PRODUCTS

As we near mid-pollination, the consistency of the fields is the one thing that stands out the most and something we haven't seen for quite some time. Jack Larson Seeds has numerous Test Plots placed throughout the area. Below are the plots that are signed:

Sanborn Plot – Corn & Soybean -- NW Corner of Hwy 71/14 Intersection – PLOT DAY – August 27

Jack Larson Seeds – Corn & Soybeans -- At Our Seed Warehouse

Timm/Berg – Corn, Corn & Soybeans -- Hwy 71 Near 210<sup>th</sup> St., 8 Miles North of Hwy 71/14 Intersection, East and West Side of Road

Jensen Plot – Corn -- Hwy 71 4.5 Miles North of Hwy 71/14 Intersection

Sanborn South – Corn – Hwy 71 Near Hwy 10 (Comfrey Tar), 7 Miles South of Sanborn

Redwood Plot – Soybean – Normandale Road, South Edge of Redwood Falls (Bypass Road)

Hansen Plot – Corn – Hwy 68 East of Evan

Please feel free to stop by anytime to check out our new products for 2016!!

### CORN

DKC46-79 – 96 Day, Excellent Yield Potential, Superior Test Weight, Very Tall Plant, Excellent for Early Silage

DKC48-56 – 98 Day, Excellent Grain Quality, Very Good Test Weight & Yield Potential

DKC53-68 – 103 Day, Overall Good Disease Package, Excellent Goss's Wilt & Test Weight

### SOYBEANS

AG1636 – 1.6 RM High Yield Potential, Narrow Rows, No Till, Standability, NOT Good IDC, Plant on Best Soils

AG2136 – 2.1 RM Broadly Adapted For Minnesota Soils, Narrow Rows, No Till, Early Planting, Yield Potential

AG2336 – 2.3 RM Very Good 2.3 Maturity, Keep Off IDC Soils

Please feel free to stop at any of our plots and check out all of our products, and put August 27<sup>th</sup> on your calendar for Sanborn Plot Day. Also visit us at Farmfest 2015, August 4<sup>th</sup>, 5<sup>th</sup>, and 6<sup>th</sup>.



# Larson Crop Insurance



With Acreage Reporting behind us, it is time to start looking at Harvest and potential claims. With the growing season that we have had, we have the potential for a great harvest! There are a few things to remember going into harvest. First, is that if you plan on putting new grain, on top of old grain in bins, you should get the old grain measured prior to putting new grain in the bins so that you can get accurate APH measurements once harvest is over. Secondly, it is important to keep an eye on the Harvest Price for Crop Insurance. The Spring Prices for corn (\$4.15) and soybeans (\$9.73) were set in February. These go off of December Corn futures and November Soybean futures. Currently the prices are December Corn (\$4.13) and November Soybeans (\$9.96) and the Harvest Price will be set with by taking the average price of the futures during the month of October. The past few years, we have had lower Harvest Prices, which have triggered Revenue Loss Claims. It is important to keep an eye on these prices during harvest. Like always, we will have claim representatives on hand at our field days if you have any questions regarding claims, policies, etc.. With Risk Management becoming more important each year, we want to make sure that everyone has the best plan in place.

**We look forward to seeing everyone at our field days!**

**\*\*As you prepare for fall, don't forget that we can help calibrate your combine monitors. This is a free service!\*\***

**JOHNNY**



## **KEY DATES:**

**Farm Fest** – Aug. 4,5 & 6

**Sanborn Plot Day** – Aug. 27

**Ribeye Appreciation Dinner**  
– September 10

**JACK LARSON SEEDS**  
20080 Magnolia Ave  
Clements, MN 56224

## **Phone #'s**

**Jack Cell: 507-829-5189**

**Johnny Cell: 612-207-6542**

**Steve Cell: 507-828-3164**

**jacklarsonseeds.com**